

## Moving the SpectraPro to a new computer

When you have bought a new computer and want to move the SpectraPro with all the databases to the new computer, you must do the following:

1. save the database(s) to a server or to a moveable media,
2. install the SpectraPro software on the new computer,
3. copy the databases to the new computer,
4. register the database(s) and
5. change the active database in the SpectraPro.

### ***Saving the database(s) on a server or a moveable media***

You can normally find your databases in the folder *c:/program files/SpectraPro/Data*. A SpectraPro database has an extension *.sp3*. If you are going to shut down your old computer before starting the new one, you must copy your databases to a server or to a moveable media, for example a CD-Rom or a USB memory.

### ***Installing the SpectraPro software***

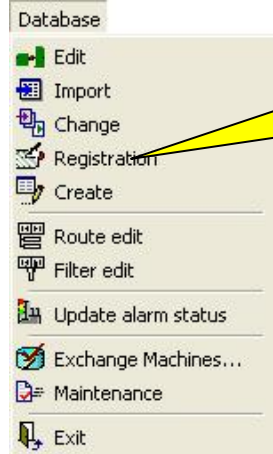
1. Close all the Windows applications!
2. Place the installation CD-ROM in the CD-ROM driver!
3. Follow the instructions from the screen!

### ***Copying the databases to the new location***

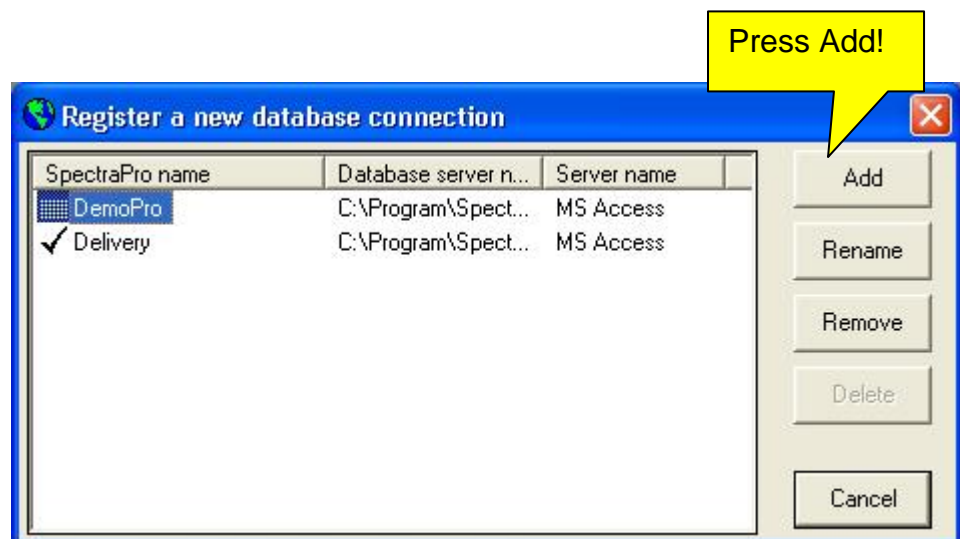
When you have installed the SpectraPro on the new computer, you can save the database(s) in the (most used) folder *c:/program files/SpectraPro/data*.

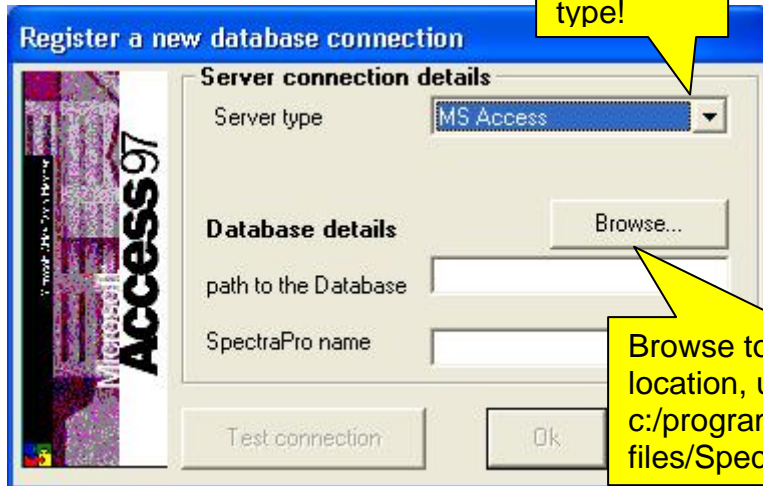
### ***Registering the database(s) in SpectraPro***

Start the SpectraPro software!



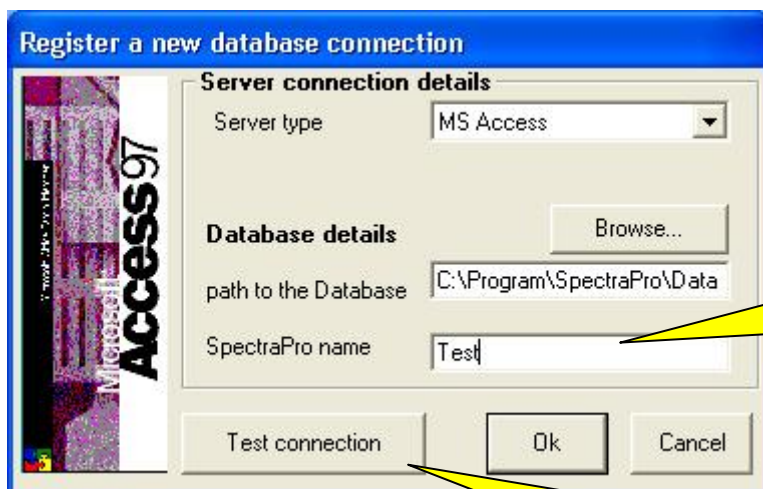
On Database menu select Registration!





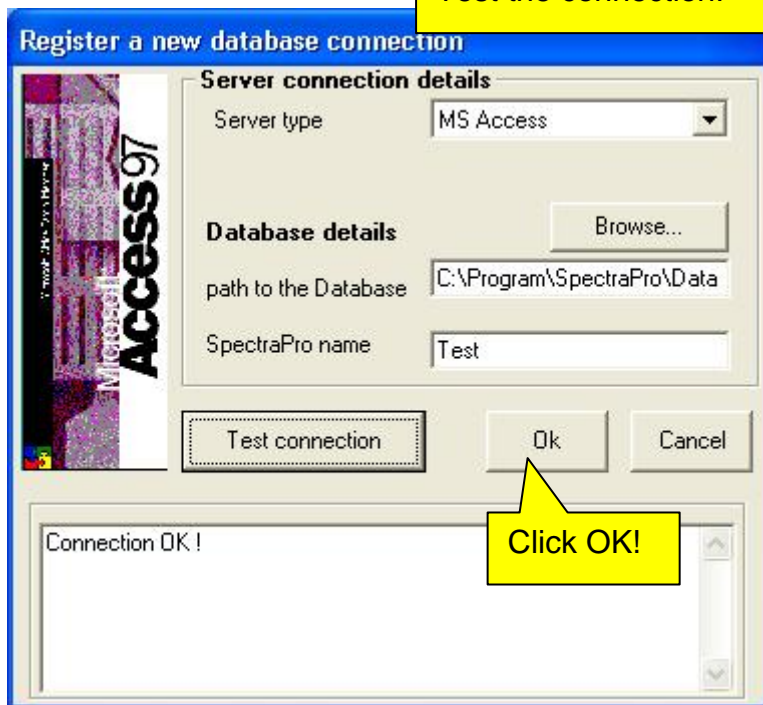
Select the database type!

Browse to proper location, usually c:/program files/SpectraPro/Data!



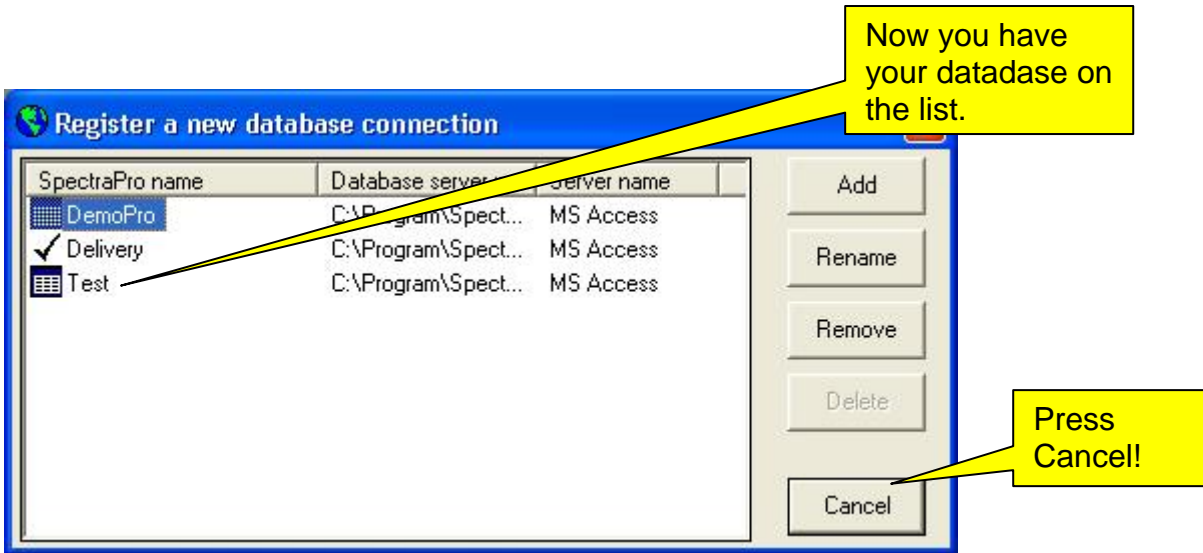
Type the name to be shown inside the SpectraPro!

Test the connection!



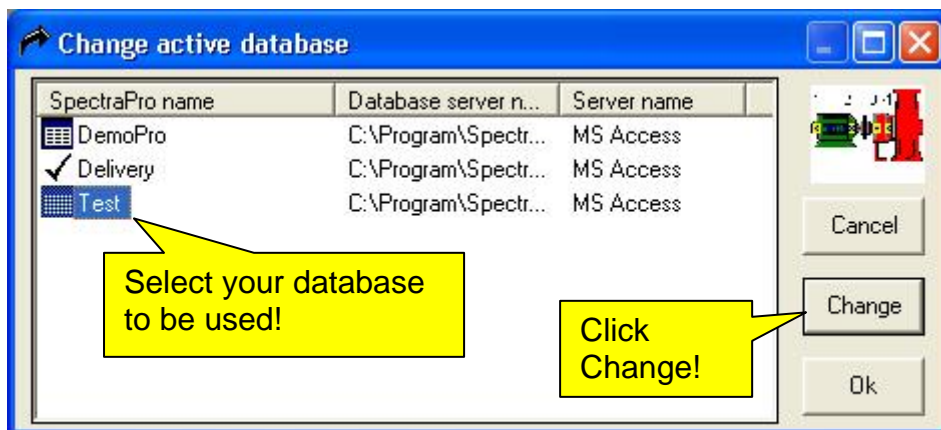
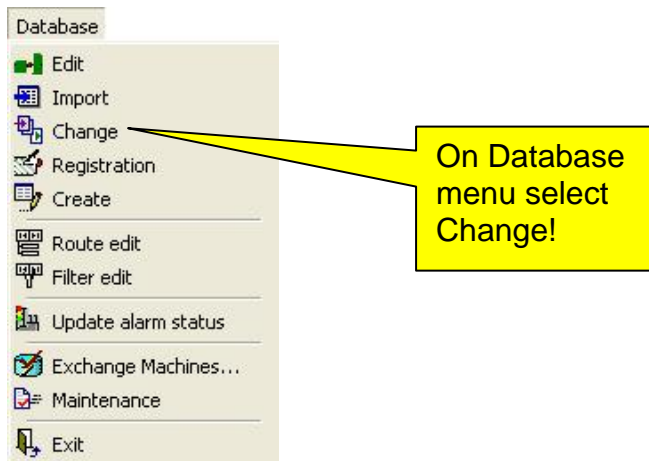
Click OK!

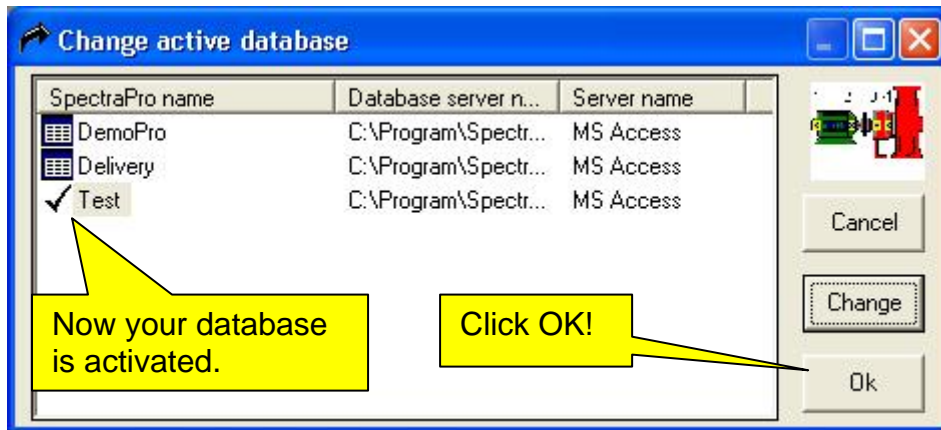
Connection OK!



### Changing the active database

When the SpectraPro software has been installed the DemoPro.sp3 is activated by default. That's why you need to change the active database.





Now you can use the database.